

Technical Information for BMS Safe- as per IS 550

Technical Information	Double Door							
Model	26	31	41	49	61	81	61	71
External: Height(H)	660	790	1040	1245	1550	2045	1550	1795
Width(W)	530	635	635	785	785	950	1065	1065
Depth (D)	560	660	680	735	735	880	710	740
Internal: Height (H)	470	580	850	1030	1340	1860	1340	1595
Width(W)	340	415	415	570	570	750	870	855
Depth (D)	290	365	365	440	440	585	440	400
Tolerance on inside dimension, mm	±25			±30		±40		±40
Internal cubic capacity- cubic meter	46	88	129	258	336	816	513	783
Tollrance on Internal Volume	Minus 7.5% (No Upper Limit)							
Door Swing (S)	410	475	520	650	650	815	475	470
Overall Depth with door at 90° (OD)	955	1165	1170	1370	1370	815	1180	1190
Overall width with door at 180°(OW)	850	1057	1365	1365	1365	1690	1845	1850
Overall Thickness (OT) of door	175	175	160	160	160	155	175	175
Floor Loading- kg/m2	1425	1530	1915	2025	2640	3100	2330	2550
Fittings:								
Shelves- Adjustable/Removable Only	One*	One*	Two*	Two*	Three*	Four*	Three*	Three*
Lockers	One*	One*	One*	One*	One*	One*	One*	One*
No. of Dual Control Lock	1	1	1	2	2	2	3	3
No. of shooting bolts. Min	6	6	8	8	10	12	18	18
Weight without Packing- Kgs.	400	550	800	1075	1260	2550	1700	2000
Weight with Packaging- Kgs	430	590	850	1175	1390	2700	1820	2150

All Dimensions are in mm

Tolerance : Weight: ± 3%, Dimensions: ± 1%

BIS Specification	
Class	Classification Code
C	TL - 30D, TL - 10X5, FR30
CC	TL - 15X6, FR30
CCC	TL - 30X6, FR30
BB	TRTL - 15X6
A	TRTL - 30X6
AA	TRTL - 60X6
A*	TRTL - 45X6
AAA	TRTL - 90X6
X	TXTL - 60X6

TL : Tool Resistant, TRTL : Torch & Tool Resistant, FR : Fire Resistant

Uniqueness



Combination Lock



Electronic Lock



Biometric Lock

Add On



SS Cladding



Made to Measure



Automatic Relocking

www.bmssafe.com

BMS
SINCE 1970



BMS
SINCE 1970

MIRARBINDO ENGINEERING PVT. LTD.

Call: +91 79 32446013, +91 95104 55111

Email: sales@bmssafe.com | Web: www.bmssafe.com

The contents and information on the catalogue is for general purposes. The recommendations of level of strength are relative and completely depend on the nature of tools used for any attack. All safes can be broken open given sufficient time, tools, torch (basic or simple home tools) expert skill and access. All warranties, recommendations and representations of any kind mentioned herein are disclaimed, including the implied warranties of merchantability and fitness for a particular use. The Company disclaims any claims, losses, demands, or damages of any kind whatsoever arising out of or resulting by reason or in consequence of any illegal breaking open of any product, or any theft, fire, robbery, fraud or other wrongful act done by any third Party with regard to Product including but not limited to direct, indirect, incidental, or consequential loss or damages, compensatory damages, injury, economic loss, or otherwise resulting from theft, fire, robbery, fraud or other wrongful act done by any third Party. The specifications, prices and features of the products may be changed at the sole discretion of the Company without prior notice.





DESIGN

BMS Safe design with multibend layers of MS Plates along with oxyacetylene resisting metal plate for torch resistance, it provides fire protection and also provides the Safety against Tool and Torch Attacks.

DOOR



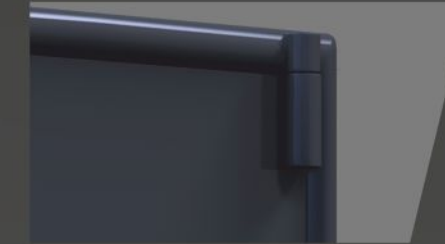
BMS Safe Door is constructed with multibend Structure of MS Plates along with Drill Resistance Block, our Special Bonding Barrier Material which protect safe from Burglary Attack, Drill Attack, Oxyacetylene Flame. Safe is constructed with Total Safe Door Thickness will be 160mm to 175mm.

BODY



BMS Safe Body is constructed with thick MS Plate of 7mm thickness with multiband structure as per IS 550 with proper welding by skilled welders. All five sides of Safe other than Door is having 110mm thickness approx including BMS special barrier material to protect safe from Burglary attack.

HINGES



The Safe Hinges is accurately machined and fitted to allow the door to move without any appreciable friction or play with facilitate oiling of hinges provided.

BOLT WORK MECHANISM



BMS Safe is provided sliding right MS Plate on secured base, such as door slab. The door slide through which the shooting bolt slide 5mm thick. The shooting bolt slide very smoothly when handle turned.

LOCKING



Lock is one of the most important components of the Safe. **BMS** makes its own Locks for the Safe to ensure the Safety and Security.

We are providing 10 levers high-precision-dual-control-unpickable Lock.

We are testing our Locks in house for our quality purpose as per BIS guideline.

AUTOMATIC RELOCKING DEVICE



We are also providing automatic relocking device which comes into operation if a lock is dislodged by explosives or attacked by other means.

FINISH

BMS Safe is rust proof. It's all components passes through the anti-corrosion chemical treatment to protect it from Rust and Corrosion. All Steel Parts are first coated from Red Oxide Primer and then two coats of paint based on PU as per Customer requirement.

Why Only BMS ?

- Indigenous product with latest preset plant
- Quality safe manufacture with a trust of 40 years
- Minimum time delivery
- PAN India presence

Tradition of Safe Selections

- What is the weight ?
- What is the thickness of metal ?
- What is the rate ?
- Resistance of every safe is question of it's capacity and quality